



UNIVERSITY
OF MEDICINE
AND HEALTH
SCIENCES



PHILANTHROPY TRANSFORMING RCSI IMPACT REPORT

YEAR IN REVIEW **2023**

Inside: The far reaching impact of your support





Dear Friends,

Your support means so much. On behalf of the entire RCSI community, with special emphasis on the students, faculty and researchers whose endeavors are uplifted by your kindness we extend a heartfelt thank you.

Across the University so many people and projects are benefiting from your vision and generosity. I am pleased to share with you that in 2023 a collective effort of 234 alumni, friends, and 75 corporate supporters raised 2.9 million. This funding has been instrumental in bolstering student programmes pioneering groundbreaking scientific research, and revolutionising the healthcare education experience for 3,000 students and staff daily, through the use of our state of the art facilities at 26 York Street.

With this impact report we want to show you some of the ways that you are helping to make a difference. In the pages that follow, I hope you will enjoy hearing from students who share their experience of four Student Programmes: Scholarships, Clinical Electives, Research Summer School, and the Student Hardship Fund. Students' inspirational stories speak to enriched educational experiences as well as the relief of overcoming challenging situations, and turning their lives around.

Generous individuals and companies have not only championed but catalysed critical research initiatives across several key research areas such as Breast Cancer, Spinal Cord Injury, and Global Surgery. Through their support, our researchers are striving for breakthroughs aimed at enhancing patient outcomes and fostering tangible improvements in quality of life.

Building on success, literally, the completion of the Room Naming project for 26 York Street is paving the way for the expansion of the RCSI campus and a new front entrance to RCSI. I am excited to include the progress being made on the construction of the new flagship building, 118 St Stephen's Green as the state of the art education and research facility is scheduled for completion in 2025.

Your commitment to RCSI leaves a meaningful and lasting imprint on the students and staff who are supported to flourish in their roles. The RCSI tradition of offering a helping hand and giving back to support the next generation endures. That you continue on this journey with us supporting our students and our researchers, means the world to us. For this, I express my warm and sincere gratitude.

A handwritten signature in black ink that reads "Aine Gibbons". The signature is fluid and cursive.

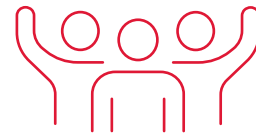
Aine Gibbons
Director of Development
and Alumni Relations

2023 IMPACT IN NUMBERS

IMPACT REPORT 2023



€2.9M
raised from
234 alumni
and friends
and **75** corporate supporters
of the university



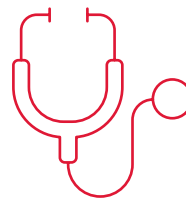
58 STUDENTS

supported through RCSI's 4
student programmes



13
SCHOLARSHIPS

in Medicine and Pharmacy



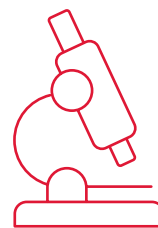
25 STUDENTS

assisted with funding for
Clinical Elective placements



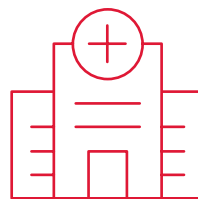
13
GRANTS

for students in the
Research Summer School
working on projects in
areas such as **Cancer**,
Multiple Sclerosis,
Neonatology and
Neurology



**9 RESEARCH
INITIATIVES**

funded in areas such as **Breast
Cancer, Global Surgery** and
Population Health



3,000

students using state of the
art learning facilities daily
in **26 York Street**



€16,000

in emergency grants assisting
students in need through the
Student Hardship Fund

AND THERE'S MORE!

In the last decade your support
to Student Programmes has
helped **428** students through

- » **203** Clinical Elective Grants
- » **91** Research Summer School Grants
- » **60** Student Hardship Grants
- » **74** Scholarships



Above: Dr Aisling Kelly, a scholarship graduate celebrates at Results Day in June 2023

Our Scholarships Programme helps students from all walks of life and all corners of the globe to attend RCSI and achieve their dream of becoming healthcare professionals.

The aim of our Medicine and Pharmacy scholarships is to help lessen the financial burden for students coming to RCSI so they can fully focus on their coursework.



WITH
YOUR HELP
IN 2023

13 STUDENTS

**WERE AWARDED
SCHOLARSHIPS**

In time these students
will go on to **assist** some
325,000 patients*

*We estimate that every graduate from the medical school has the potential to care for 25,000 patients over the span of their career.

Together, we have been able to create a prestigious and enduring Scholarship Programme and for that, we are truly grateful.

SCHOLARSHIPS

IMPACT REPORT 2023

FROM DREAM TO DEGREE

Franco, Kiran Pathak Pharmacy Scholarship



"The scholarship had the single, most definitive impact on my experience at college. It helped with my bills, clinical books and being able to afford lunch in the middle of Dublin 2, an important social aspect of attending college"

Above: Franco is pictured with a classmate at his graduation.



"I graduated in November 2023. I was the first in my family to get into college and graduate. I know that I must set a great example for my two younger brothers."

A FUTURE IN CARDIOLOGY

Boyce, International Medicine Scholarship

"I love the theatre. I'm interested in Interventional cardiology and obstetrics for my internship applications. The worry that comes with tight pockets is not good with a demanding subject like medicine. The scholarship helps in curbing transport and food costs so I can study stress free to deliver good grades and for that, I'm very grateful."



Above: Boyce (far left) and friends attending a College Ball in 2023.

EXCELLENCE ON AND OFF THE PITCH

Kim, Professor Moira O'Brien Sports Scholarship

The Professor Moira O'Brien Sports Scholarship celebrates exceptional sporting achievements of students undergoing an undergraduate degree.

"The scholarship allows me the time to train, perform and study at an elite level. It contributes to being able to play two sports and compete to the highest national level in both. I received first class honours in my examinations. I have been incredibly fortunate to have this scholarship as I have been able to pursue both sporting and academic excellence."



Above: Kim (left) competing for the ball.



WITH
YOUR HELP
IN 2023
25 STUDENTS
UNDERTOOK CLINICAL
ELECTIVE PLACEMENTS
in **7** countries across **Africa**,
Europe and **North America**
in specialties such as
Paediatric Oncology,
Obstetrics and **Gynaecology**,
Emergency Medicine and
General Surgery

Clinical Elective placements are an integral part of the educational experience in RCSI providing students with an opportunity to improve their clinical knowledge and skills.



Above: Maryam did her clinical elective placement in Imperial Hospital, London.

CONFIDENCE BUILDING ELECTIVE

Maryam

"During my placement, I was involved in the care of a boy from ED to surgery to post operative care. This experience taught me the importance of dedication, resilience and reinforced my commitment to a career in medicine. The elective was instrumental in enriching my learning experience and providing me with an invaluable opportunity to further my clinical knowledge and academic research.

Your commitment to funding clinical electives underscores the significance of investing in the next generation of healthcare professionals."

TANZANIA A DIFFERENT PERSPECTIVE

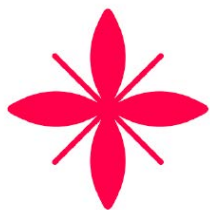
Eoin

"My placement in paediatric oncology in Dar es Salaam was emotionally challenging as the specialty is not always associated with great outcomes. I became friendly with the children and their families.

I gained clinical skills performing lumbar punctures and bone marrow biopsies and I gained a greater awareness of the difficulties in achieving healthcare equity worldwide."



Above: Eoin on his life changing elective in Tanzania.



STUDENT HARDSHIP FUND

A helping hand



RCSI's Student Hardship Fund is a lifeline for students experiencing unforeseen emergency crises. Below are testimonials from students who received financial assistance through the Hardship Fund in the past year which enabled them to continue with their studies.

When my circumstances changed and I became sick, I wasn't sure I would make it through the exams. The Hardship Fund covered my rent when I was unable to work due to illness. Support from the Hardship Fund made a dark time in my life just a little bit brighter.

My mom lost her job, and I needed urgent support to finish my degree. I couldn't cover my own expenses and I thought it was going to be the end of my dream of being a doctor. The Hardship Fund got me through a tough time and helped me to graduate. Thank you so much for your help.

Receiving assistance from the Hardship Fund truly made a difference. It provided me with the support I needed to stay focused on my studies, alleviating the stress of financial uncertainty. I am immensely grateful for the university's assistance and the assistance of alumni to help students in times of need.



WITH
YOUR HELP
IN 2023

9 RESEARCH
INITIATIVES

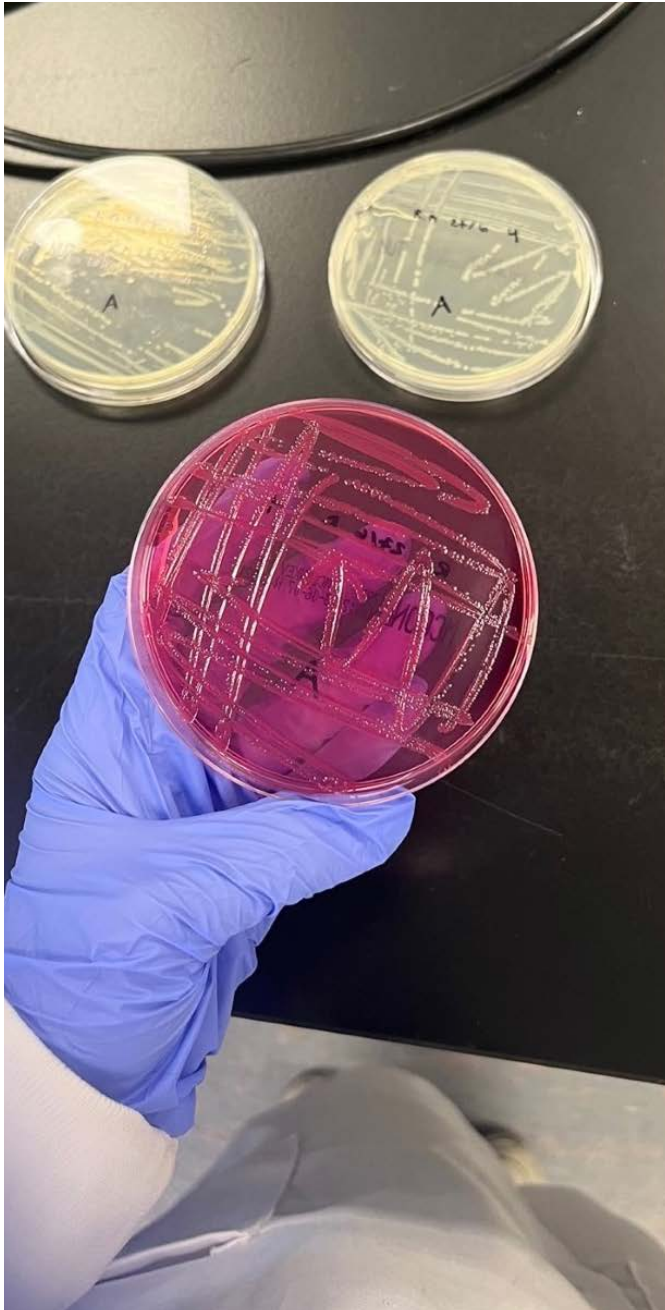
WERE FUNDED IN
AREAS SUCH AS

Breast Cancer,
Global Surgery and
Population Health

With a focus on clinical and patient centered research, RCSI's research initiatives succeed in leading impactful discoveries which address key Irish and International health challenges. RCSI researchers work to translate new research discoveries into real world treatments that improve the quality of life of patients.

RESEARCH SUMMER SCHOOL

IMPACT REPORT 2023



RCSI's Research Summer School fosters an understanding in students of how research drives scientific breakthroughs and insights, which ultimately benefit patients and society. The programme helps students gain experience into the role researchers play in improving patients lives in an ever changing healthcare environment. Students are also given the opportunity to pitch their ideas for healthcare solutions at the Student Innovation Challenge.



WITH
YOUR HELP
13 IN 2023
STUDENTS

RECEIVED A GRANT TO
ATTEND THE RESEARCH
SUMMER SCHOOL

Supported and Mentored by
RCSI Principal Investigators
and **their teams.**

Working on
RESEARCH PROJECTS
including **biochemistry,**
molecular biology, immunology,
microbiology, neurosciences,
physiology, population health
and delivery of health services.

RESEARCH SUMMER SCHOOL

IMPACT REPORT 2023

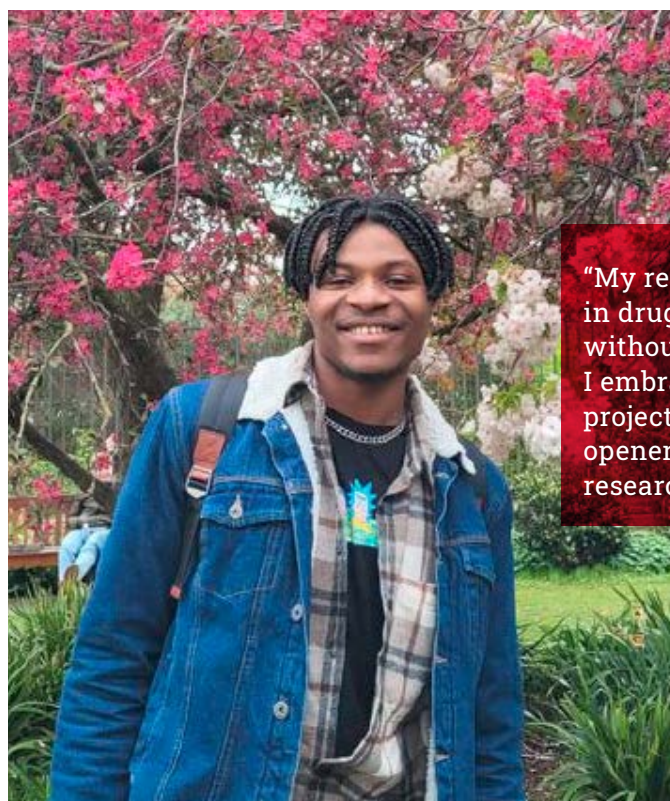
HANDS ON RESEARCH

ASHLEY

"The key skills in the simulation session left a lasting impression. It was hands on learning that was both informative and engaging. The laboratory sessions helped me to experience the latest technology and techniques and were incredibly helpful for future research projects."



Above: Ashley in the lab during her time in the Research Summer School.



HANDS ON RESEARCH

EMMANUEL

"My research project was on 3D hydrogel, with application in drug delivery and wound treatment. As someone without research experience, at first it was challenging. I embraced the work process and was invested in the project from start to finish. The project was an eye opener into critical planning and failures associated with research."

Left: Emmanuel took part in the 2023 Research Summer School.



"Our research showed that drugs called FTO inhibitors currently in trial for other cancer types could potentially be significantly beneficial for patients with breast cancer that has spread to the brain. Our hope is that these findings will translate into better outcomes for patients with advanced breast cancer."

Professor Leonie Young

BREAKTHROUGH BREAST CANCER RESEARCH

An In Depth Look

Each year, there are 690 deaths from breast cancer in Ireland. Most deaths from the disease result from the spread of tumours to organs around the body. About 10 to 15 of women with stage 4 breast cancer develop brain metastases which can be particularly aggressive.

Researcher Professor Leonie Young and her colleagues at the Beaumont RCSI Cancer Centre tracked changes in breast cancer as it moved into the brain. They found that, when the tumours reached the brain, they changed in a way that made them vulnerable to a known drug.

The research findings identified potential new approaches to treating advanced breast cancer in the future.

RCSI and Research and Innovation go hand in hand. The following pages feature a small sample of the wealth of exciting and groundbreaking research that is being conducted across the university funded by alumni, corporate supporters and friends.

Leading impactful research in SPINAL CORD REPAIR



Above: Researchers and members of the PPI panel are pictured with Professor Fergal O'Brien (far left).

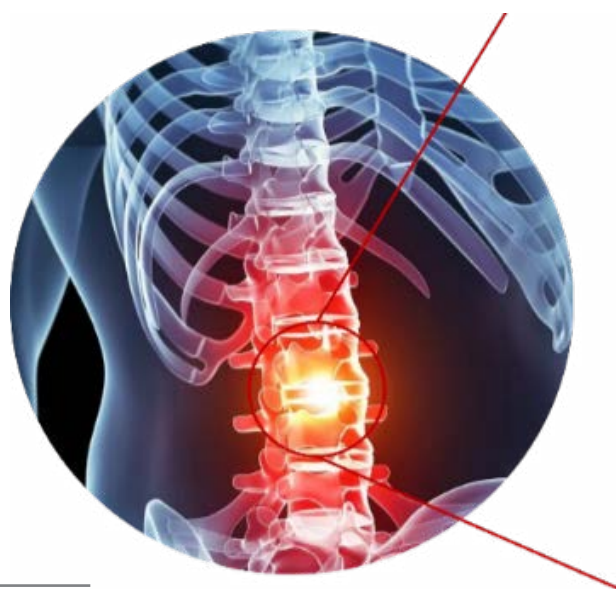
Annually, approximately 10,000 people suffer a spinal cord injury in the EU with over 330,000 individuals of all ages living with cord injury.

The Spinal Cord Injury Research Project in RCSI has developed a novel multifunctional biomaterial implant to help repair the injured spinal cord.

Led by Professor Fergal O'Brien, the research has been guided by a Patient and Public Involvement (PPI) Advisory Panel consisting of research scientists, clinicians and seriously injured rugby players living with spinal cord injury who provide oversight and feedback on the progress of the scientific research.

The researchers found a way to allow the transmission of electrical signals across damaged nerve tissue, encouraging the growth of neurons so restoring lost neural function.

By combining the properties of graphene and collagen the result was a bio hybrid material that is softer and more adaptable to the body than what is currently used. The material presents a significant step forward and could remove the need to use metal implants in the body in certain treatments.



The research may have the potential to revolutionise the way that spinal cord injury is treated.

GLOBAL SURGERY

Safe and equitable surgery for all



RCSI's Institute of Global Surgery seeks research driven solutions to global health issues, with a vision to create sustainable in country systems to meet the surgical needs of their populations.

The RCSI KidSURG project, is the first initiative that enables the delivery of safe paediatric surgical care to rural communities in Malawi in Africa. Children under 15 years account for more than half of the total population, 94% do not have access to safe and affordable surgery, and 85% will require surgical treatment by the age of 15.

Through local healthcare partners, supervisory and in service training visits to district hospitals are conducted linking specialists with district surgical teams making quality assured surgery available to children who would otherwise lack such essential care.

IN MALAWI IN 2023:

- » 48 training visits were made to district hospitals by specialist surgeon trainers
- » 67 clinicians were trained
- » Managed clinical network achieved a 98% consultation rate (System whereby district clinicians consult securely by mobile phone with specialist supervisors to get advice on surgical management or referral of children) to a central hospital



Research to address and improve emerging population issues

SCHOOL OF POPULATION HEALTH



RCSI's School of Population Health aims to tackle the world's population health challenges through research, education and collaboration.

The School aims to understand health diseases and their determinants, and develop methodological approaches for population health research.

Pioneering research is currently being carried out in several areas including ageing, mental health and chronic disease.

A key focus is a project researching Cardiovascular Disease (CVD). Each year, nearly 9,000 people in Ireland lose their lives to CVD, yet an estimated 80% of premature heart attacks and strokes are preventable.

The project focuses on identifying and addressing specific populations that have been historically overlooked or marginalised in CVD prevention efforts.



"Our aim is to prioritise sub populations within Ireland and interventions to reduce health inequalities and ensure equitable access to CVD prevention services."

Professor Edward Gregg, Head of the RCSI School of Population Health

The School's research shows that a greater focus on prevention across the whole spectrum of CVD is needed to save thousands of lives each year and ease the pressure on Ireland's healthcare system.

ALUMNI GIVING IN ACTION

IMPACT REPORT 2023

How alumni are coming together to support RCSI Student Programmes

At the annual RCSI Gathering in August 2023 alumni and guests returned for 3 days of celebration, to reconnect with their alma mater and their classmates. Embracing the spirit of giving back, class giving is a tradition at RCSI led by alumni celebrating milestone reunions which raises vital funds for RCSI Student Programmes.

**IN 2023,
OVER 90
ALUMNI**

**ACROSS
12
REUNION
CLASSES**

**RAISED
€139,000
FOR STUDENT
PROGRAMMES**

**THANKS
FOR YOUR
INCREDIBLE
GENEROSITY!**



CAMPUS CAPITAL INITIATIVES

IMPACT REPORT 2023

Transforming healthcare education in 26 YORK STREET



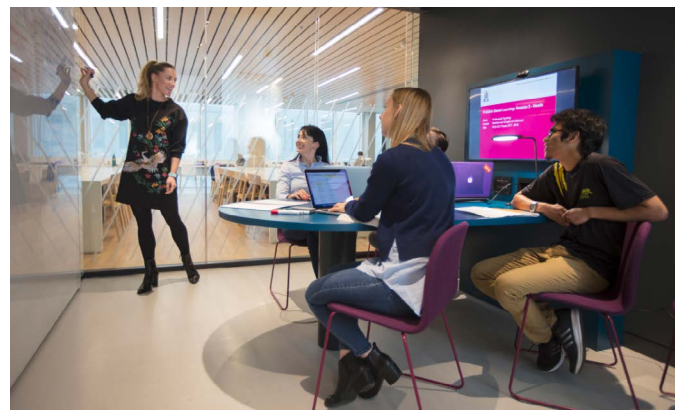
2023 marked the fifth year since 26 York Street opened and it continues to showcase RCSI's vision for the future of medical and surgical education and clinical training.

It is acknowledged as one of the most advanced healthcare simulation centres in Europe.

An estimated 3,000 students and staff visit the campus and 26 York Street daily for study, work and extracurricular activities.

Thank you to everyone who supported our Room Naming project in 26 York Street.

The 56 rooms, labs, teaching and sports facilities named for alumni, corporate supporters and friends are an inspiration for students who use the building daily. **CLICK HERE** to see what your support has meant for this iconic building.



CAMPUS CAPITAL INITIATIVES

IMPACT REPORT 2023

A new front door to RCSI 118 ST STEPHEN'S GREEN



Exciting advancements are on the horizon for RCSI's expanding campus as the eagerly anticipated 118 St Stephen's Green is set to open its doors in 2025. This new flagship building marks a significant chapter in RCSI's history, re-establishing its historic connection to St Stephen's Green and serving as the new campus gateway - a bridge between RCSI and the wider public.

Comprising 8 floors, the building will house Teaching Spaces, Green research labs, 195 seater Auditorium, Student Community Learning Zones and a Public Health Engagement Gallery.



The building will elevate RCSI's research with three floors dedicated to cutting edge laboratories, write up spaces, and support facilities for ongoing research initiatives.

Creating a dialogue between RCSI and the public



The jewel in the crown will be the foyer space, envisioned as a first of its kind MyHealth Gallery and Public Engagement Programme. The Gallery's mission will be to elevate population health issues in Ireland to augment public awareness regarding health and well being initiatives to enhance the health of the population.

Collaborating with RCSI educators, clinicians, researchers and scientists we will draw upon RCSI's research expertise in chronic disease areas such as cancer, cardiology, and population health to create a programme responding to the latest developments in national and international healthcare and lifestyle management.



The Gallery will feature talks, events, workshops, and exhibitions to engage and interact with the public in meaningful ways.

Above and left: An artist's impression of the planned MyHealth Gallery at the front entrance of 118 St Stephen's Green.



Scan here to
read more about
leaving a legacy



RCSI
1784
SOCIETY



OPENING DOORS TO THE FUTURE

LEAVE A LEGACY THAT WILL TRANSFORM LIVES

**By leaving a gift in your will to RCSI you
can help shape the future of medicine and patient care**

If you would like further information on legacy giving please call

Aíne Gibbons, Director of Development on **+353 1 402 5189** or email **ainegibbons@rcsi.ie**



On behalf of all the students and
researchers who you support during
the year, we are sending you a
thousand thank yous!

Míle buiochas
Thank you
Gracias
Merci
Takk
Asante
Danke
Shukran



RCSI
UNIVERSITY
OF MEDICINE
AND HEALTH
SCIENCES